

Daventry

28 High Street, Daventry, NN11 4HU

T: 01327 879869

Offices also located in Northampton

stonhills.co.uk



**5 Flying Dutchman Way, Daventry  
Northamptonshire NN11 9AD**

**£219,995**

A well presented three storey townhouse offering flexible living space throughout. The property benefits from a SOUTH FACING REAR GARDEN, gas to radiator heating and double glazing throughout. The accommodation briefly comprises of an entrance hall, cloakroom, kitchen/diner and bedroom five/family room. To the first floor there is a lounge and bedroom one with built in wardrobes and an en-suite.

The second floor offers three further bedrooms and a family bathroom. Outside there are gardens and a garage in a block to the rear.

Viewing is recommended.



Access to the property is gained via a timber door into -

#### ENTRANCE HALL

Laminate style flooring. Stairs rising to first floor. Single panel radiator. Coving to ceiling. Doors to kitchen/diner, bedroom five/family room and a cloakroom.

#### CLOAKROOM

Low level WC. Wall mounted wash hand basin with tiled splash backs. Single panel radiator. Laminate style flooring.

#### KITCHEN/DINER

14'4 x 10'4 (4.37m x 3.15m)

Double glazed window and patio door to rear aspect. Double panel radiator. Fitted in a range of wall and base mounted units with roll top work surfaces over. Sink drainer unit with mixer tap over. Built in double oven, hob and extractor fan. Space which may be suitable for white goods. Cupboard housing boiler.

#### BEDROOM FIVE/FAMILY ROOM

10'7 x 10'1 (3.23m x 3.07m)

Double glazed window to front aspect. Single panel radiator. Laminate style flooring. Under stairs storage cupboard.

#### FIRST FLOORING LANDING

Single panel radiator. Stairs rising to second floor landing. Doors to lounge, bedroom one and airing cupboard.

#### LOUNGE

14'6 x 9'11 (4.42m x 3.02m)

Two double glazed windows to rear aspect. Two single panel radiators. Coving to ceiling. TV point.

#### BEDROOM ONE

12'4 to wardrobe x 10'1 (3.76m to wardrobe x 3.07m)

Two double glazed windows to front aspect. Single panel radiator. Door to en-suite. Built in wardrobes to one wall with shelving and hanging rails.

#### EN-SUITE

Recently replaced tiled shower cubicle. Low level WC. Pedestal wash hand basin with tiled splash backs with vanity unit under. Single panel radiator. Electric shaver point. Heated towel rail.

#### SECOND FLOOR LANDING

Access to roof space. Doors to all further bedrooms and bathroom.

#### BEDROOM TWO

14'5 x 10' (4.39m x 3.05m)

Two double glazed windows to front aspect. Single panel radiator. Built in wardrobes with shelving and hanging rails.

#### BEDROOM THREE

10'3 x 7'1 (3.12m x 2.16m)

Double glazed window to rear aspect. Single panel radiator.

#### BEDROOM FOUR

10'3 x 7'3 (3.12m x 2.21m)

Double glazed window to rear aspect. Single panel radiator.

#### BATHROOM

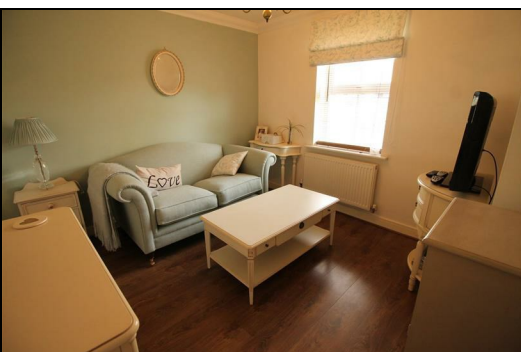
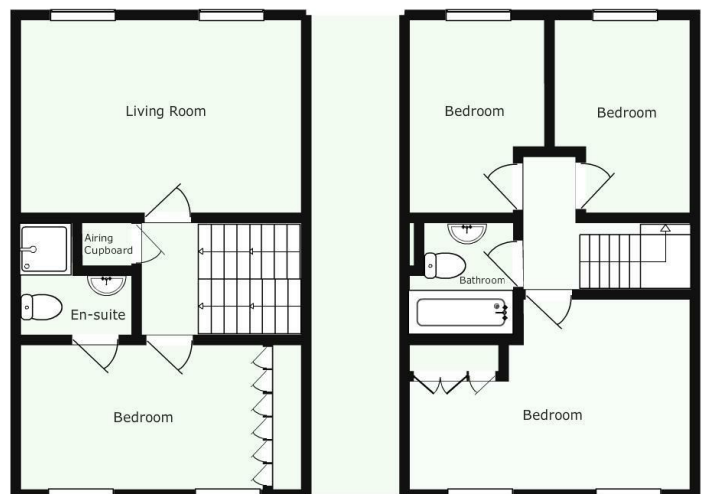
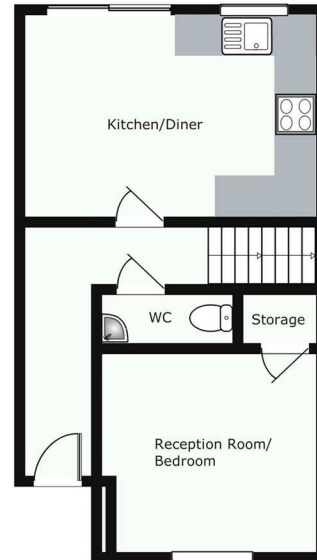
Enclosed panel bath. Low level WC. Pedestal wash hand basin. Single panel radiator. Electric shaver point.

#### OUTSIDE

The front garden - Pavement to front door.

The rear garden - Enclosed by timber panel fencing. Mainly laid to lawn with south facing aspect. Gated access to rear and garage.

Single garage - Up and over door with parking space.



**Zoopla.co.uk**

NATIONAL ASSOCIATION  
OF  
**NAEA**  
ESTATE AGENTS

O-E-A  
**Ombudsman**  
www.oea.co.uk

**rightmove.co.uk**  
The UK's number one property website

Appliances: Stonhills have not tested any equipment, fittings for services and so cannot verify they are in working order. The buyer is advised to obtain verification from their Solicitor or Surveyor. Measurements are for guidance only and are approximate. The buyer is therefore advised to check measurements if they are required for any other purpose e.g. fitted carpets, furniture, etc.